








# 11443 SW 243 TER

Homestead, Florida

|   |   |   |   |   |
|---|---|---|---|---|
|  |  |  |  |  |
| BEDROOMS  | BATHROOMS   | AREA  | REFERENCE NUMBER  | YEAR BUILT  |
| 5   | 3   | 3,399FT <sup>2</sup>  | A11242820   | 2006  |

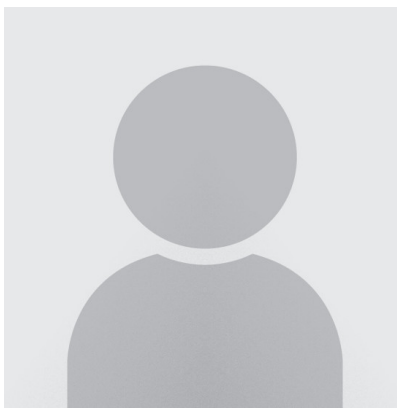
PRICE: USD 579,000

## SUMMARY

Spacious home over 3,000 sq ft of living area. Laminate wood throughout, except bedrooms. Stainless steel appliances, wood cabinets, granite counters. 1 bedroom on the main floor. All

## AMENITIES

- Air Conditioning
- City/mains water
- Lagoon
- Disposal
- Washer
- Detached
- Hurricane Shutters
- Garage
- City sewer
- Circuit Breaker
- Dryer
- Concrete Block Constructi...
- Formal Dining
- Carpeted Floors
- Wood shingle roof
- Electric hot water
- Dishwasher
- Microwave
- Electric Cooling
- Fence
- And more...



## MERCEDES TOLL

**BHHS EWM Realty**

550 South Dixie Highway - Coral Gables, Florida

toll.m@ewm.com

<https://www.southfloridaopenhousesearch.com/pdf-listing/4c5be6d223d1bc2bc100e62>

LANGUAGES I SPEAK:

English