

22421 SW 125 AVE B

Miami, Florida



BEDROOMS

5



BATHROOMS

3



AREA

1,184FT²



REFERENCE NUMBER

A11165105



YEAR BUILT

2022

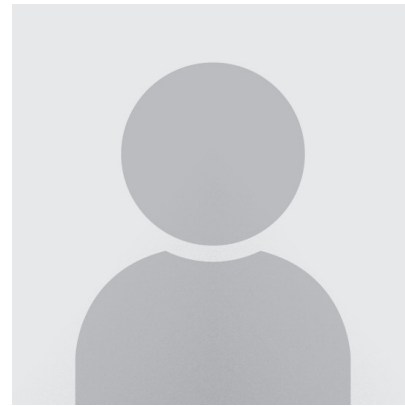
PRICE: USD 472,990

SUMMARY

Welcome to Chloe's Estates (Raymonde Model), a brand-new very spacious 2 story twin-home community located in Miami FL! Homebuyers can choose from two architecturally designed floor

AMENITIES

- Air Conditioning
- Security system
- Garden View
- Dishwasher
- Microwave
- CBS Construction
- Vinyl Floors
- Fireplace(s)
- Electric hot water
- No Amenities
- Disposal
- Washer
- Electric Cooling
- And more...
- Pets allowed
- Electric
- Circuit Breaker
- Dryer
- Washer/Dryer Hook-Up
- Tile Floors



REYNALD DESARMES

Malibu Bay Realty

42 SE 4 Rd - Homestead, Florida

reynald.desarmes@gmail.com

<https://www.southfloridaopenhousesearch.com/pdf-listing/4e76f78a23d1bc2bc1657f46/>

LANGUAGES I SPEAK:

English

